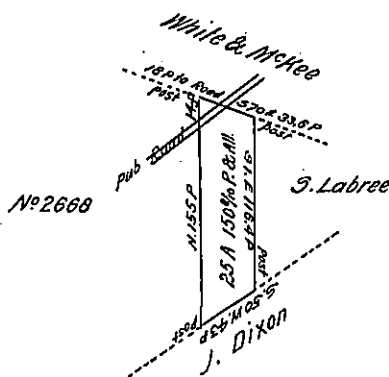


A draft of a tract of land situated in the Township of Virginia, and County of Warren, containing 25 acres 150<sup>th</sup> perches and allowance of six per cent for roads etc. Surveyed the 22<sup>d</sup> day of March A.D. 1881, in pursuance of a Warrant granted to Brill Marsh, dated the 25<sup>th</sup> day of February A.D. 1881.

To Claron H. Dunkel Secy Int Affs  
Harrisburg Penn.

D. F. A. Wheelock C.S.



No	Bearings Distances		Latitudes		Departures		Corrected Latitudes		Corrected Departures		M.D		D.M.D		Double Areas	
			N.	S	E	W	N	S	E	W			N.	S		
1	N	38.75	38.75				38.81									
2	S70E	8.40		2.88	7.90			2.88	7.86		7.86	7.86				22.6368
3	S 1 "	29.10		29.10	46			29.06	46		8.32	16.18				470.1208
4	N 50 W	10.75		6.88	8.27			6.87	8.32		8.32	8.32				57.1584
			38.75	38.86	8.36	8.27	38.81	38.81	8.32	8.32					20	522.2880
																27.4993
																160
																164.90580
																274993
													106			4399.8880
													160			4150.8377
																25a. 150.8377As

IN TESTIMONY that the above is a copy of the original remaining on file in the Department of Internal Affairs of Pennsylvania, made conformably to an Act of Assembly approved the 16th day of February, 1888, I have hereunto set my Hand and caused the Seal of said Department to be affixed at Harrisburg, this twenty-seventh day of March 1906.

*Geo. P. Johnson*  
Secretary of Internal Affairs.